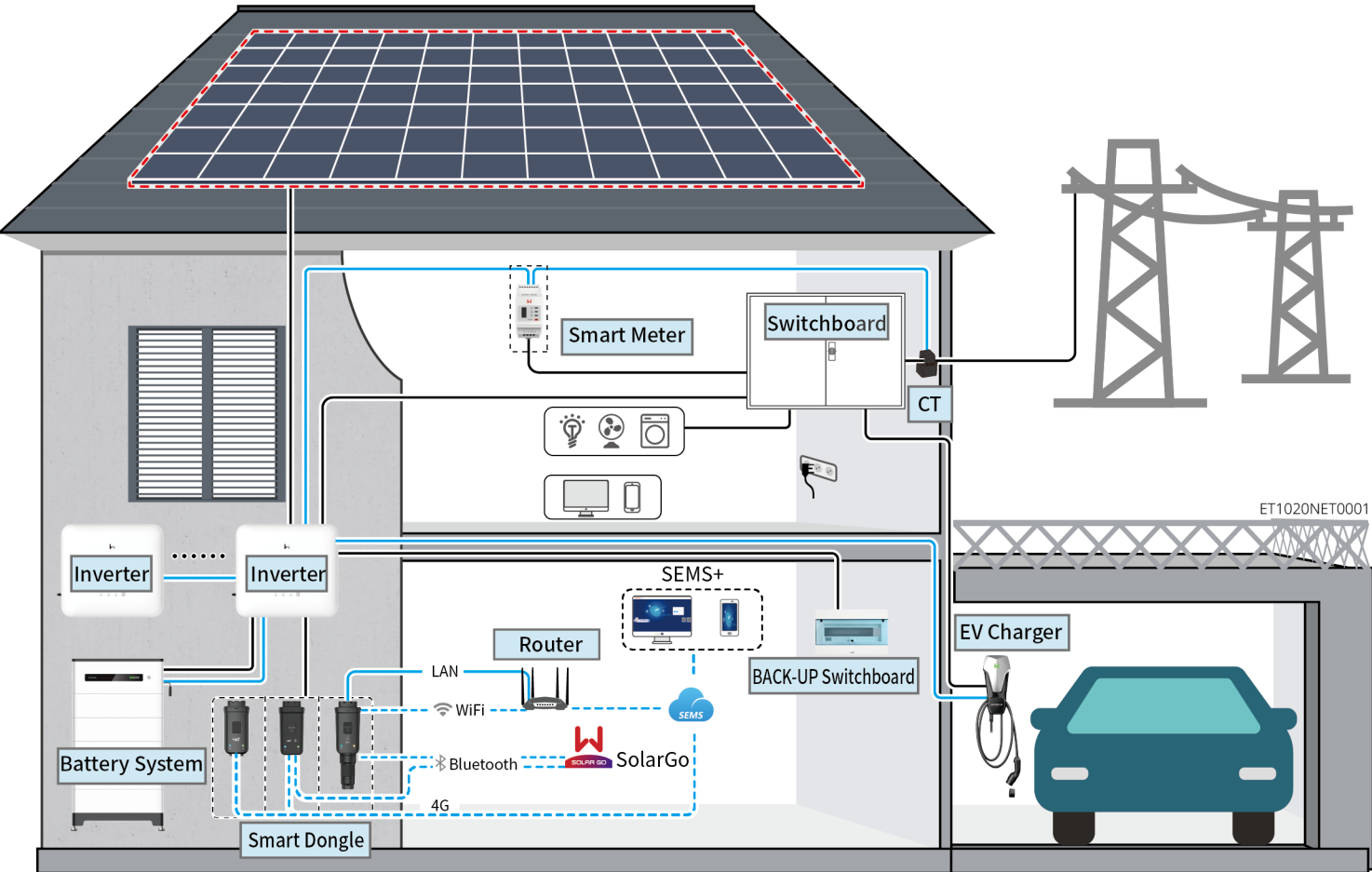


WARNING

The information in this quick guide is subject to change due to product updates or other reasons. This guide cannot replace the product labels or the safety precautions in the user manual unless otherwise specified. All descriptions in the manual are for guidance only.

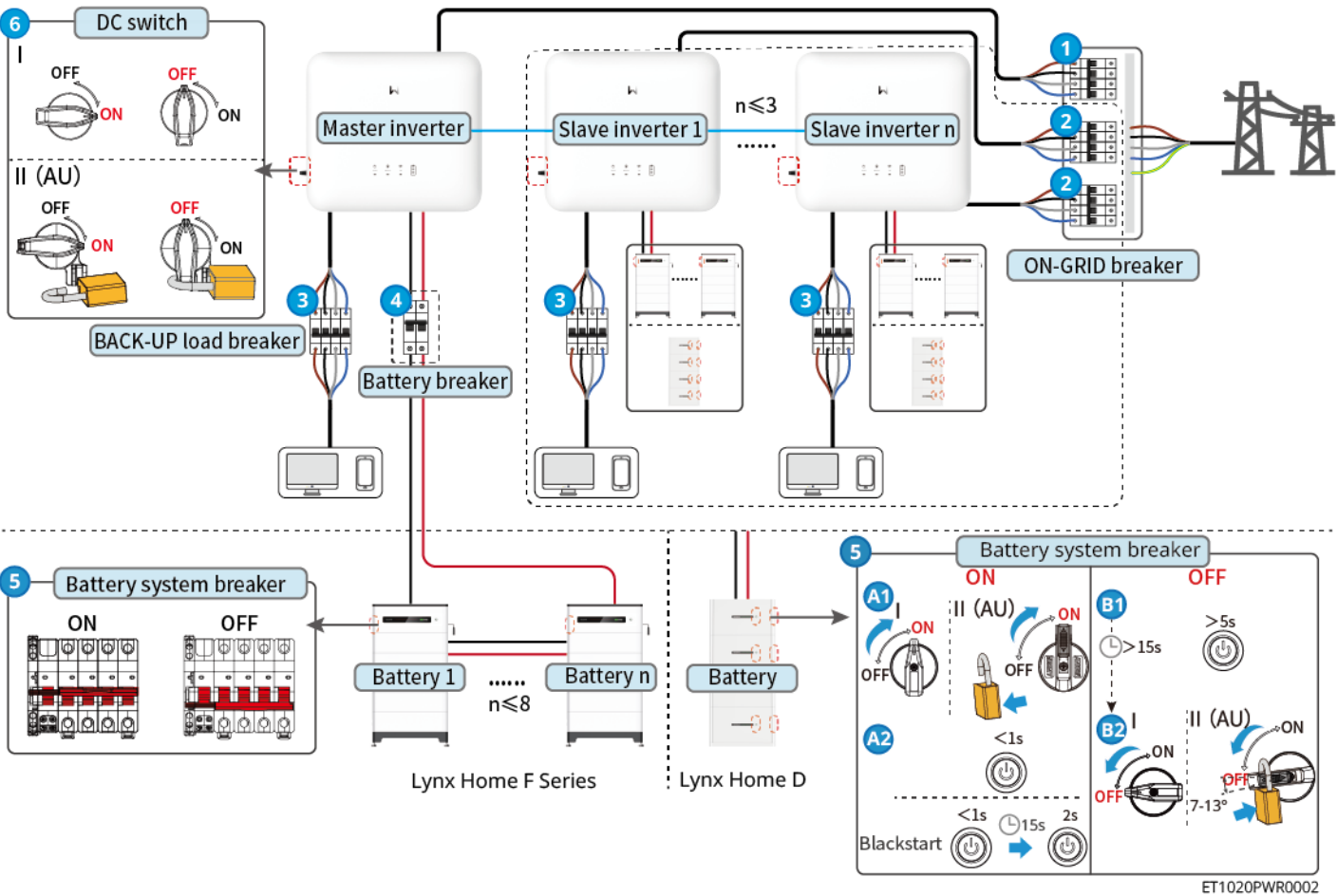
01 Networking



Device	Model			Description
Inverter	GW6000-ET-20, GW8000-ET-20, GW9900-ET-20, GW10K-ET-20, GW12K-ET-20, GW15K-ET-20			A maximum of 4 inverters can be connected in a parallel system. Inverter firmware requirements for parallel connections: <ul style="list-style-type: none">Consistent firmware versionARM version: 15.441 or aboveDSP version: 03.3009 or aboveSolarGo version 6.8.0 or above
	Lynx Home F G2	Lynx Home F LX F9.6-H-20	Lynx Home F Plus+	
Battery system	LX F12.8-H-20	LX F6.6-H	LX F9.8-H	<ul style="list-style-type: none">The Lynx Home F battery system does not support parallel use.A maximum of 8 battery systems can be clustered in a system.Do not mix connect battery systems of different versions.
	LX F16.0-H-20	LX F13.1-H	LX F16.4-H	
	LX F19.2-H-20			
	LX F22.4-H-20			
	LX F25.6-H-20			
	LX F28.8-H-20			

Device	Model	Description
Smart Meter (Optional)	GM3000	<ul style="list-style-type: none">The inverter has a built-in smart meter, and CT cannot be changed. CT ratio: 90A/90mA. If the built-in meter of the inverter is insufficient, you can contact the dealer to purchase a GM330 or GM3000 smart meter.GM3000: GM3000 and the CT, which cannot be replaced, are included in the inverter package. CT ratio: 120A/40mA.CM330: order the CT for GM330 from GoodWe or other suppliers. CT ratio: nA/5A.<ul style="list-style-type: none">nA: CT primary input current, n ranges from 200 to 5000.5A: CT Secondary input current.
	GM330	
Smart Dongle	WiFi/LAN Kit-20	<ul style="list-style-type: none">For standalone use, please use the WiFi/LAN Kit-20, LS4G Kit-CN, 4G Kit-CN, 4G Kit-CN-G20, or 4G Kit-CN-G21 modules.In parallel scenarios, the EzLink3000 must be connected to the master inverter. Do not connect any communication module to the slave inverters.The firmware version of EzLink should be 04 or above.
	LS4G Kit-CN, 4G Kit-CN, 4G Kit-CN-G20 or (optional) 4G Kit-CN-G21 (China only)	

02 Power On/Off



Power on/off

1 → 2 → 3 → 4 → 5 → 6

④ : Install or not based on local laws and regulations.

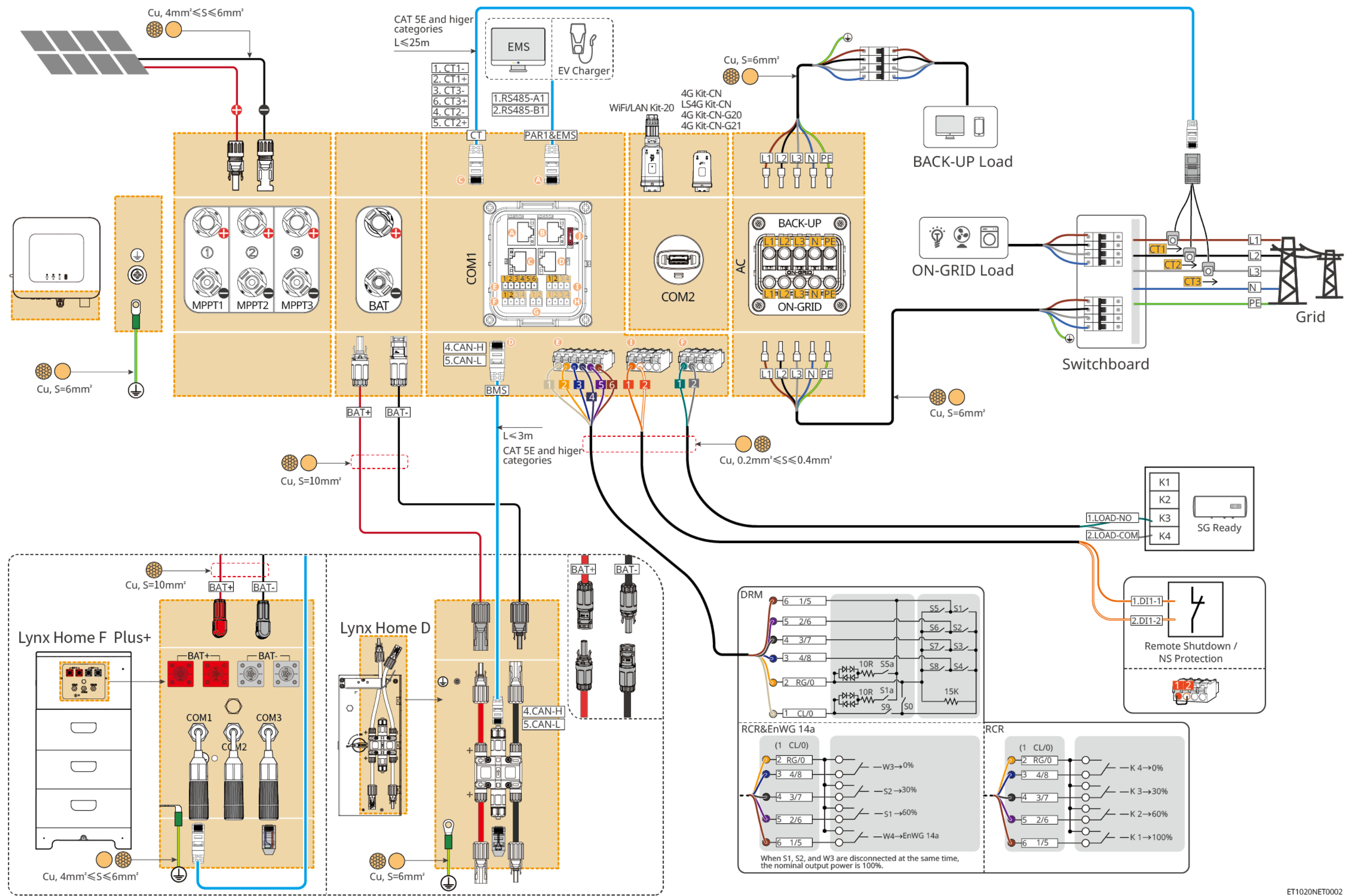
Steps	1 Installation	2 PE	3 PV	4 Battery	5 AC	6 COM	7 Communication module		
Inverter							4G Kit-CN LS4G Kit-CN 4G Kit-CN-G20 4G Kit-CN-G21	WiFi/LAN Kit-20	Ezlink3000
Tools	1 D: 80mm φ: 8mm 2 M5 1.2-2N·m	M5 1.5-2N·m	Recommend: PV-CZM-61100 	Recommend: VXC9 M5 1.5-2N·m	2 M5 1.5-2N·m Or	 M4 1.5N·m			

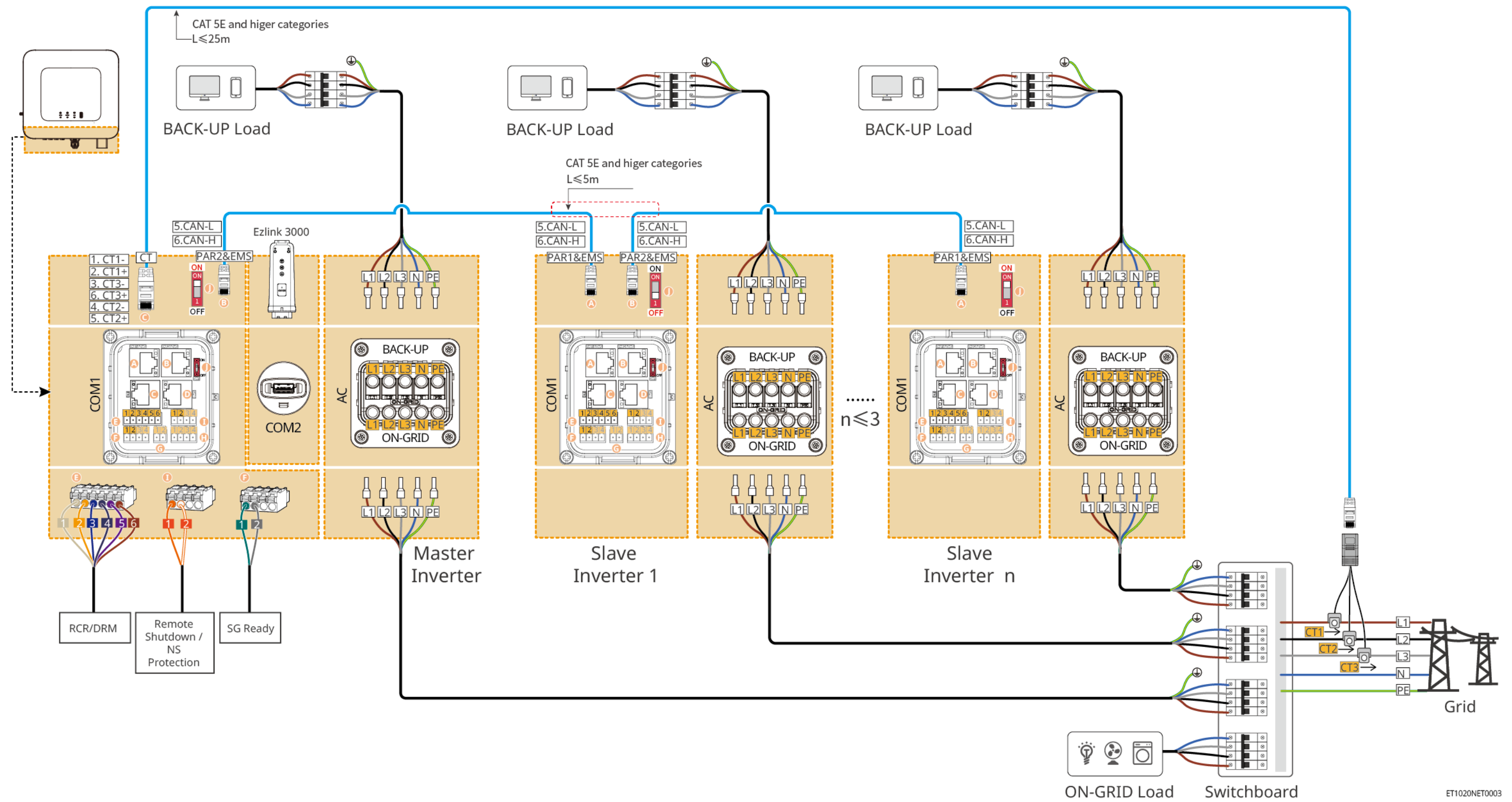
Steps	1 Installation				2 PE	3 Battery				4 COM
Battery	Lynx Home F G2	Lynx Home F	Lynx Home F Plus+	Lynx Home D		Lynx Home F G2	Lynx Home F	Lynx Home F Plus+	Lynx Home D	Lynx Home F Lynx Home D
Tools	 1 D: 80mm φ: 10mm 2 ST5.5 4N·m 3 M5 4N·m				1 M6 6-7N·m 2 M5 4N·m	Recommend: YQK-70 	Recommend: YQK-70 	Recommend: YQK-70 	Recommend: YQK-70 	Recommend: VXC9 M5 1.5-2N·m

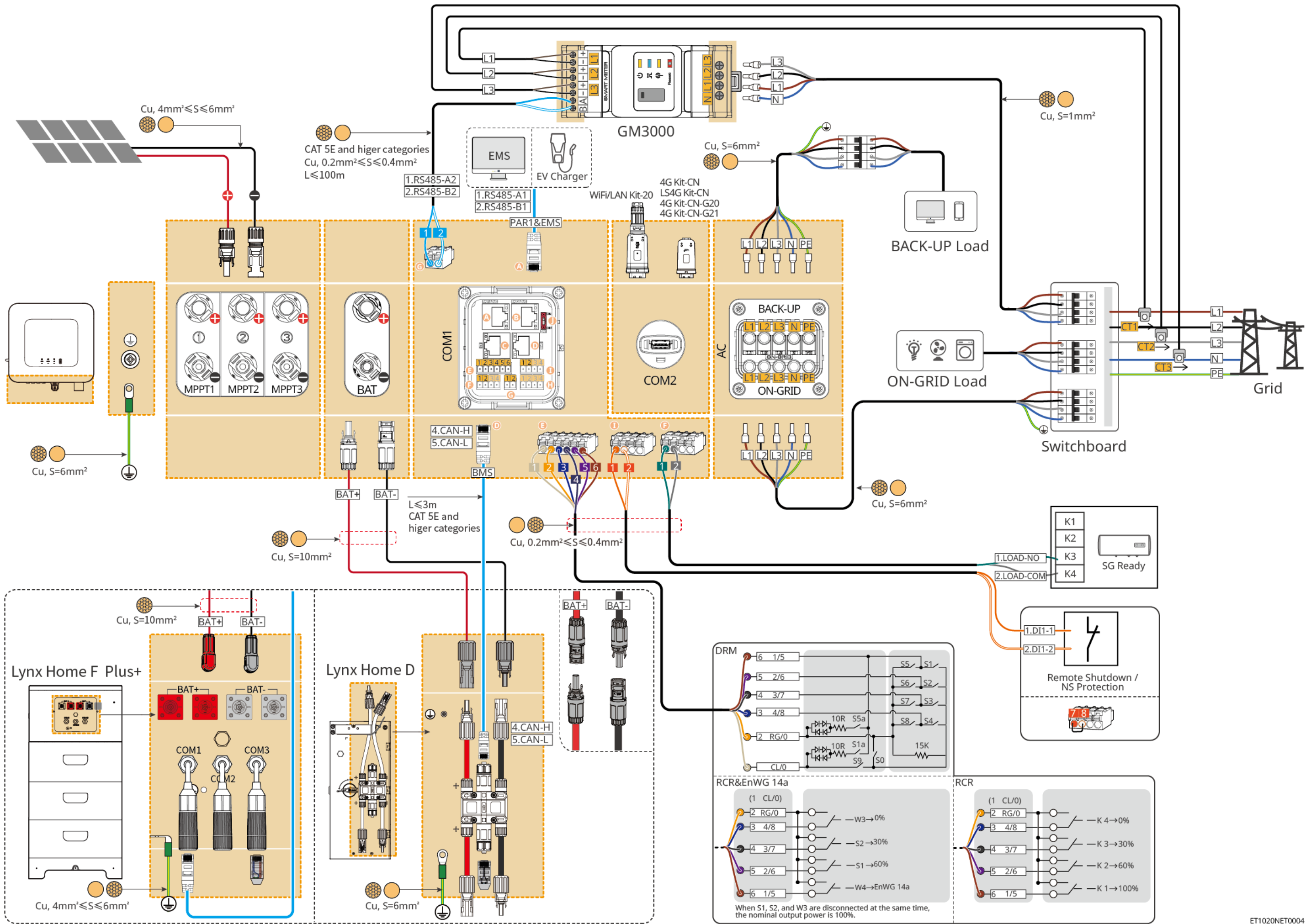
Steps	1 Installation		2 Cable Connections		3 Power
Smart meter	GM3000	GM330	GM3000 	GM330 	

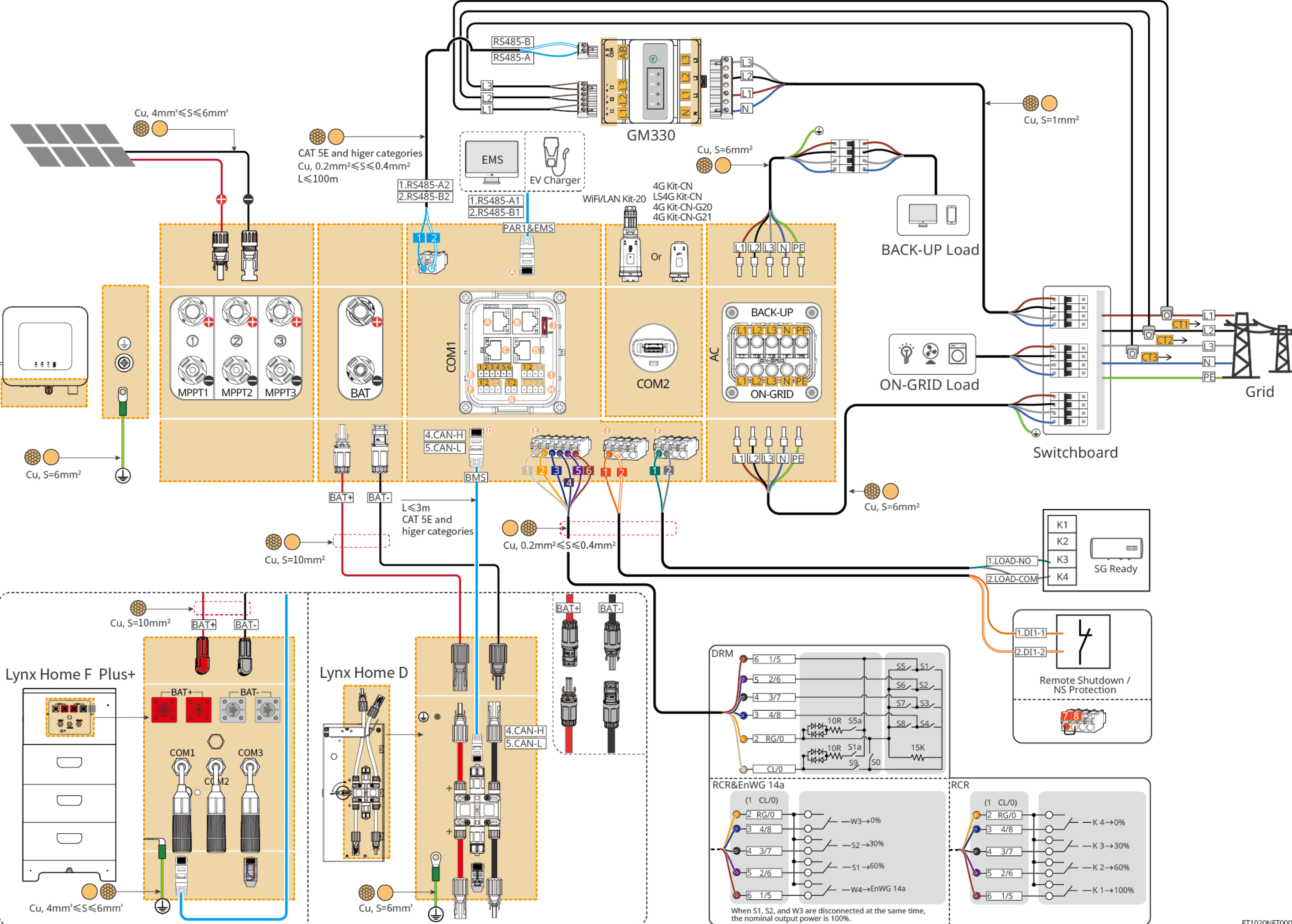
04 Wiring Diagram

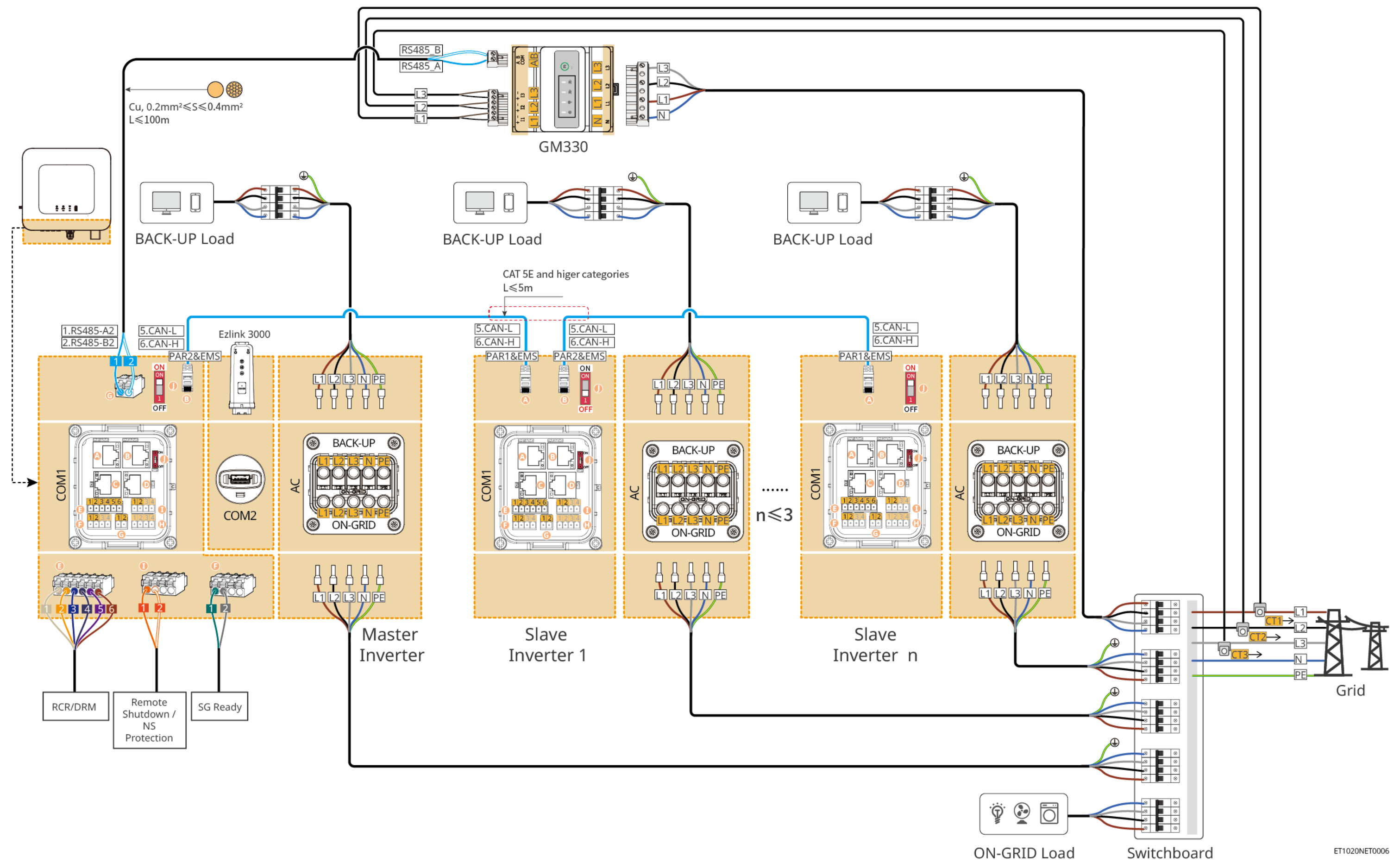
ET G2 6-15kW (single) + Lynx Home F or Lynx Home D + WiFi/LAN or 4G





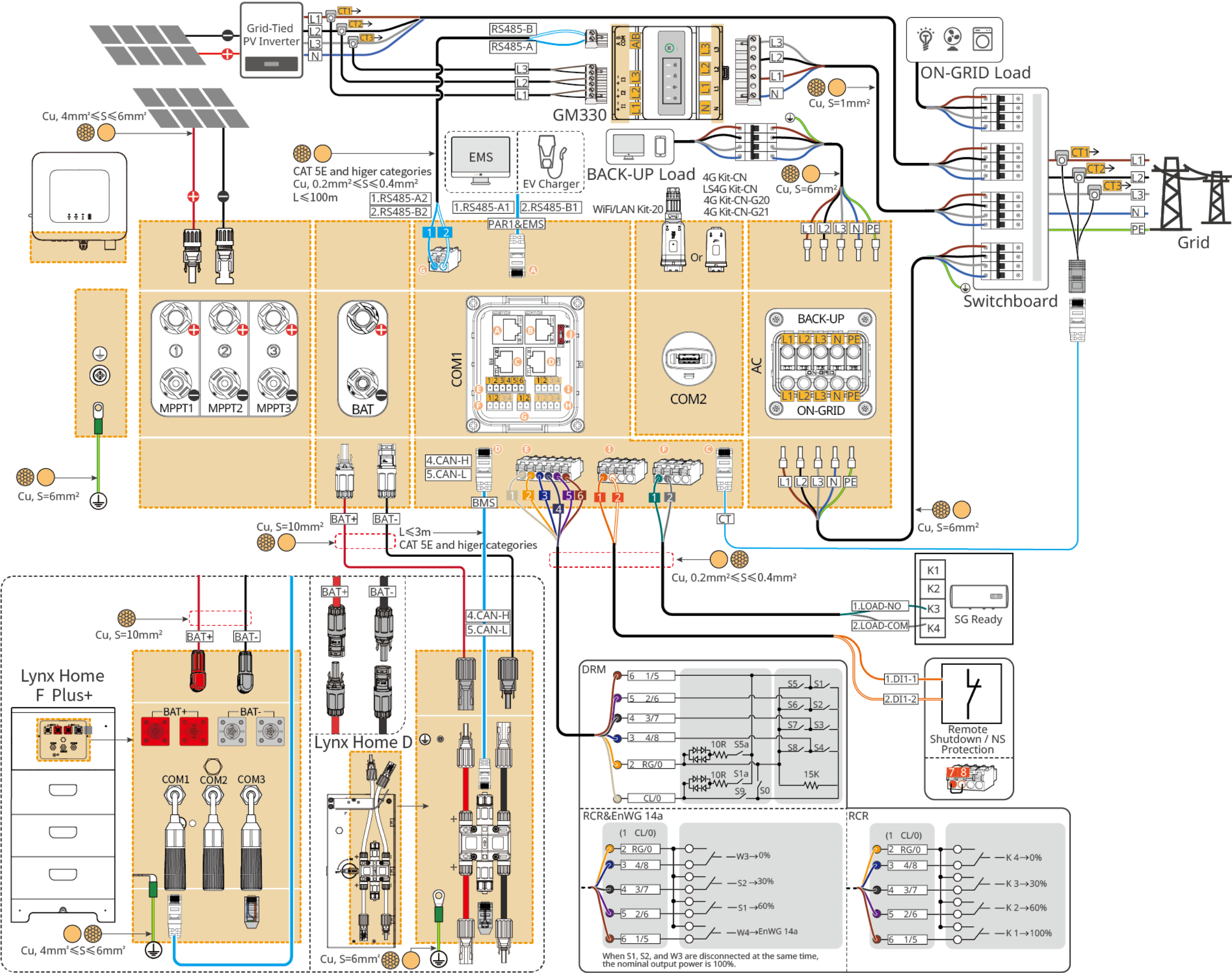






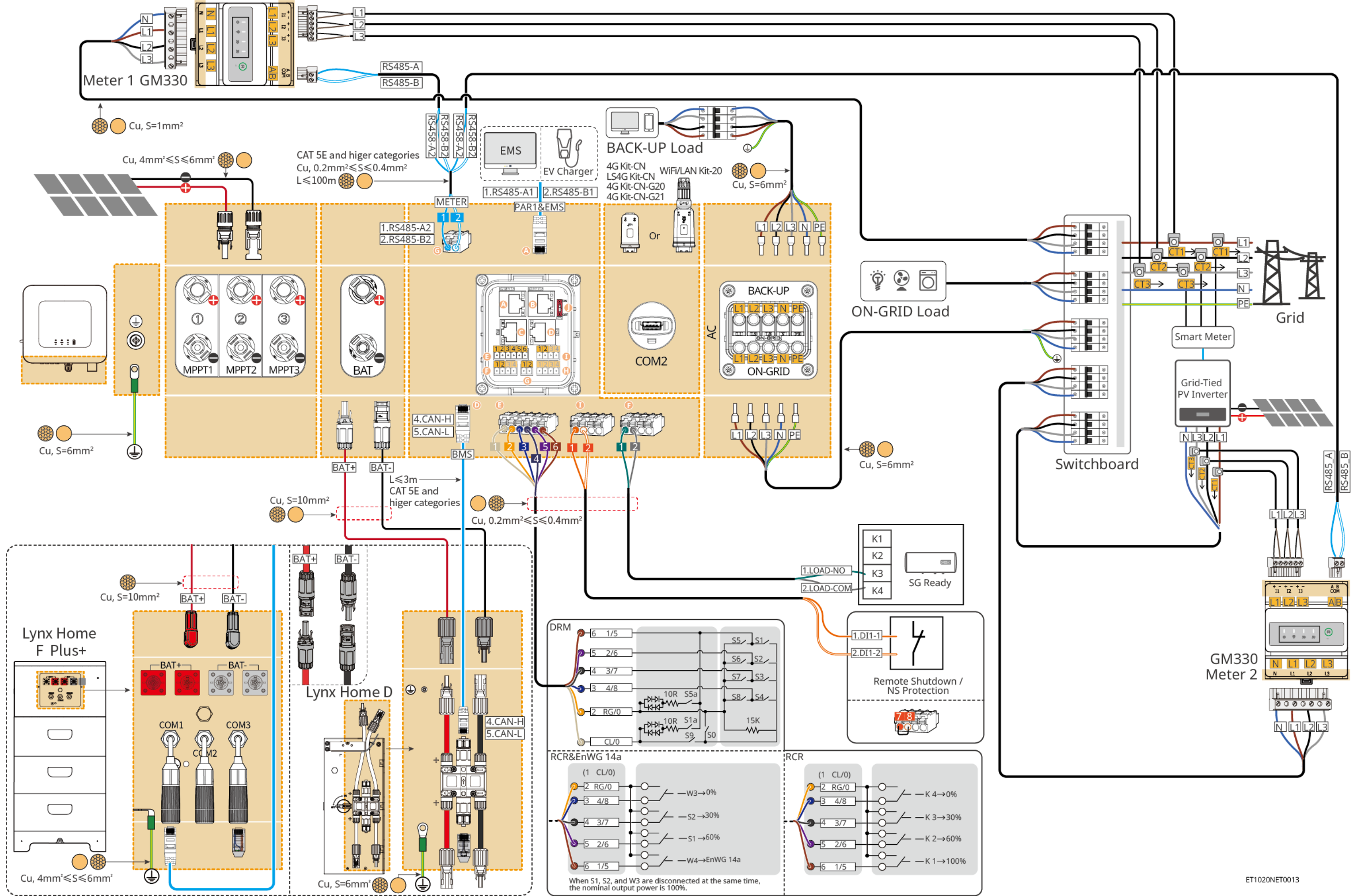
Networking solution for coupled scenario load monitoring and grid-connected generator power generation monitoring

ET G2 6-15kW (single) + grid-connected inverter + Lynx Home F or Lynx Home D + built-in meter + GM330 + WiFi/LAN or 4G



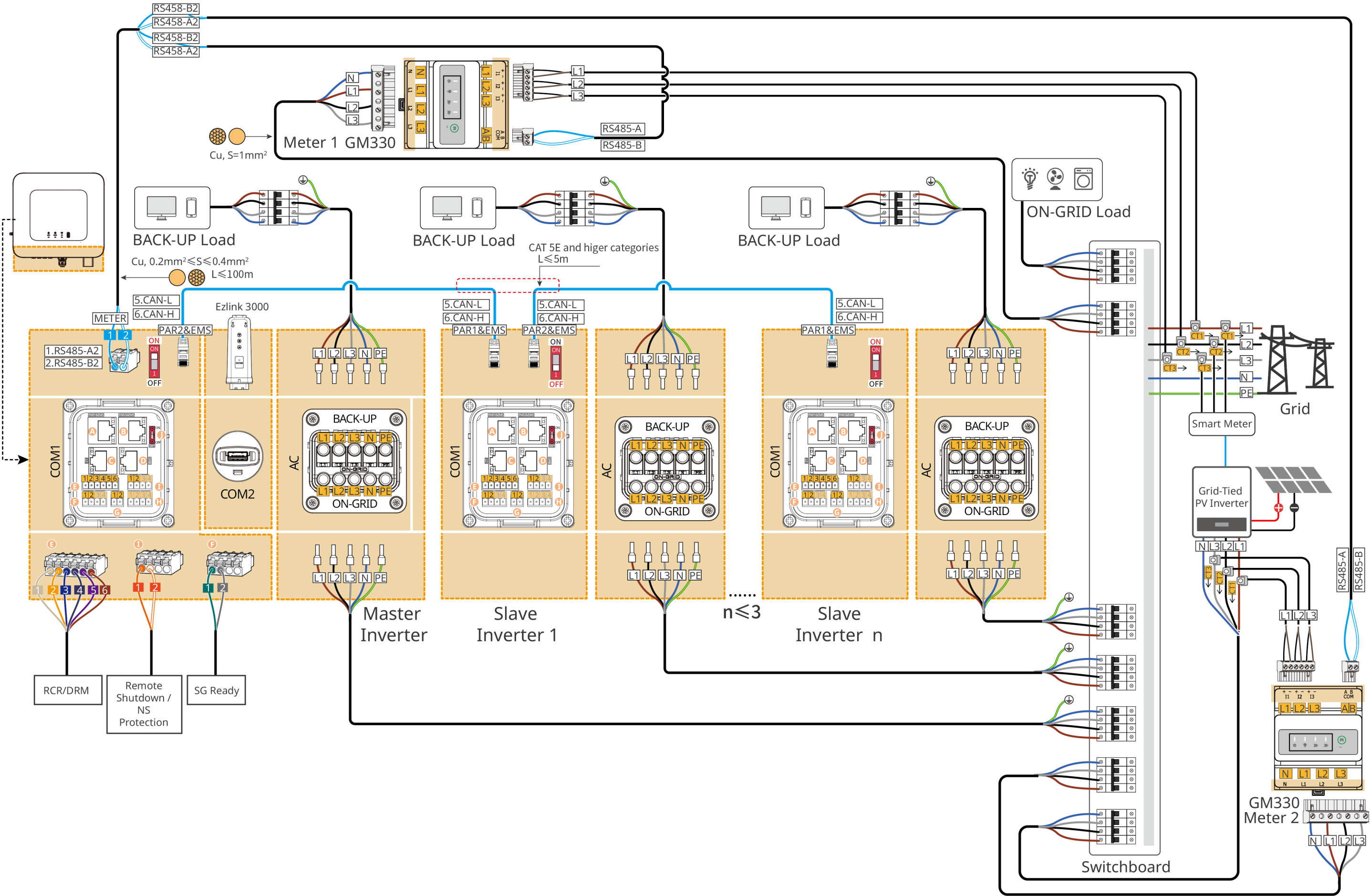
Networking solution for coupled scenario load monitoring and grid-connected generator power generation monitoring

ET G2 6-15kW (single) + grid-connected inverter + Lynx Home F or Lynx Home D + GM330 + GM330 + WiFi/LAN or 4G



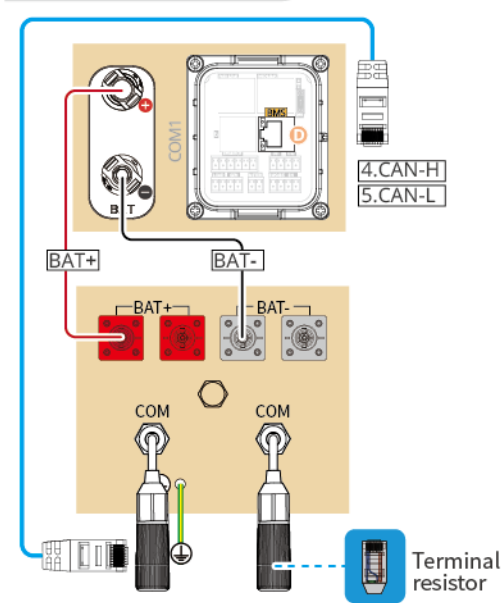
Multi-machine coupled scenario load monitoring and grid-connected generator power generation monitoring networking solution

ET G2 6-15kW (multiple) + grid-connected inverter + GM330 + GM330 + Ezlink3000

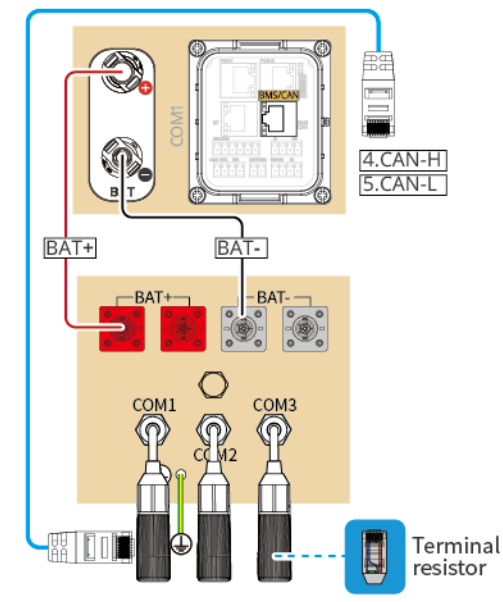


Battery System Wiring Diagram

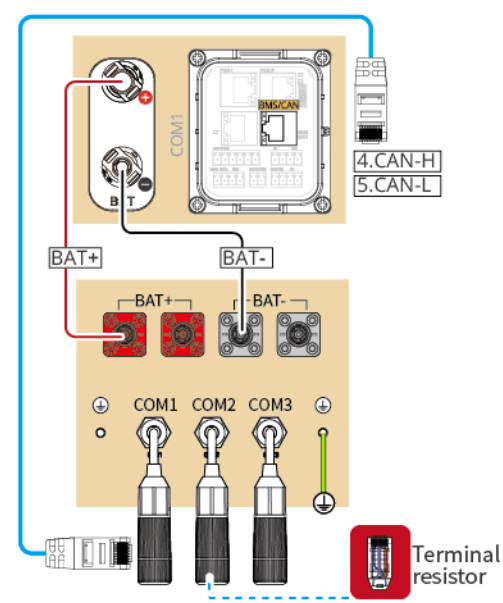
Lynx Home F



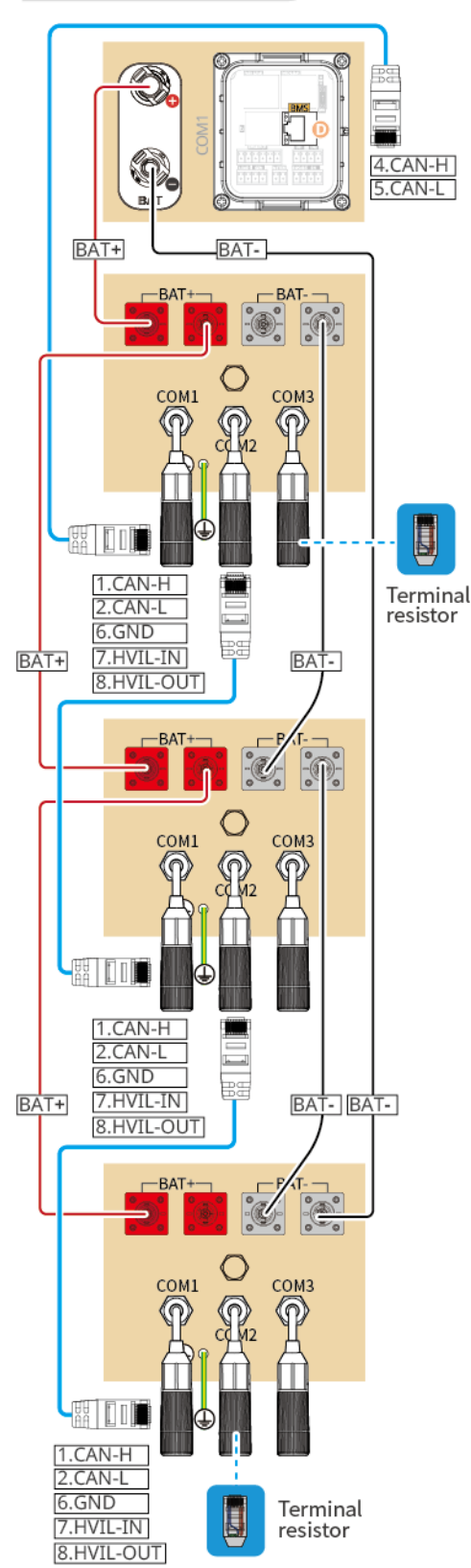
Lynx Home F Plus+



Lynx Home F G2

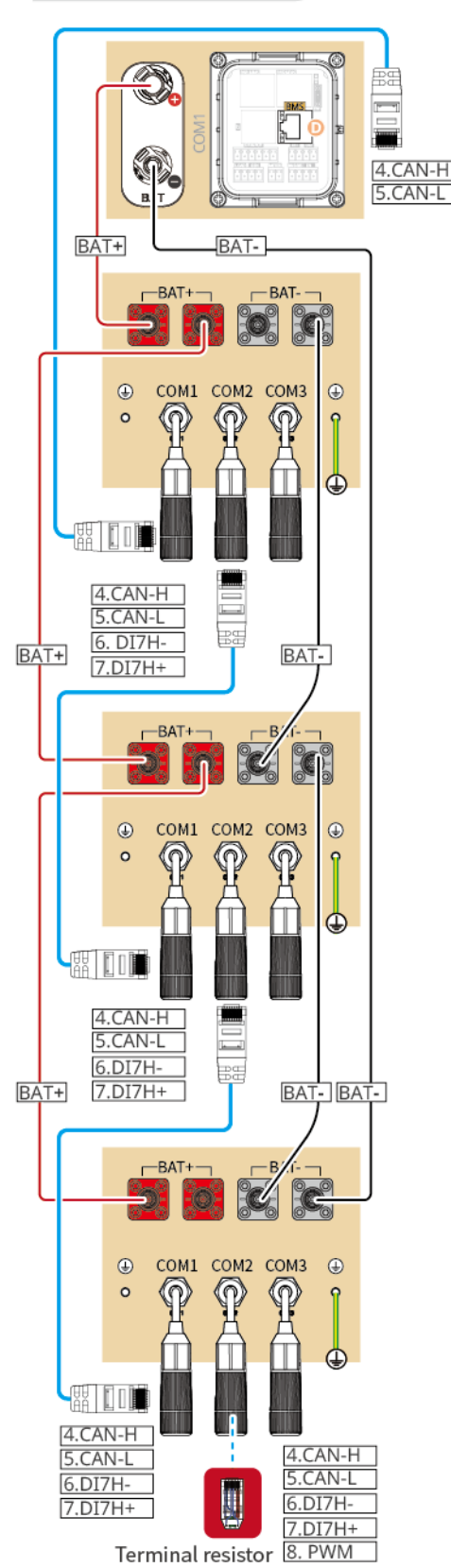


Lynx Home F Plus+

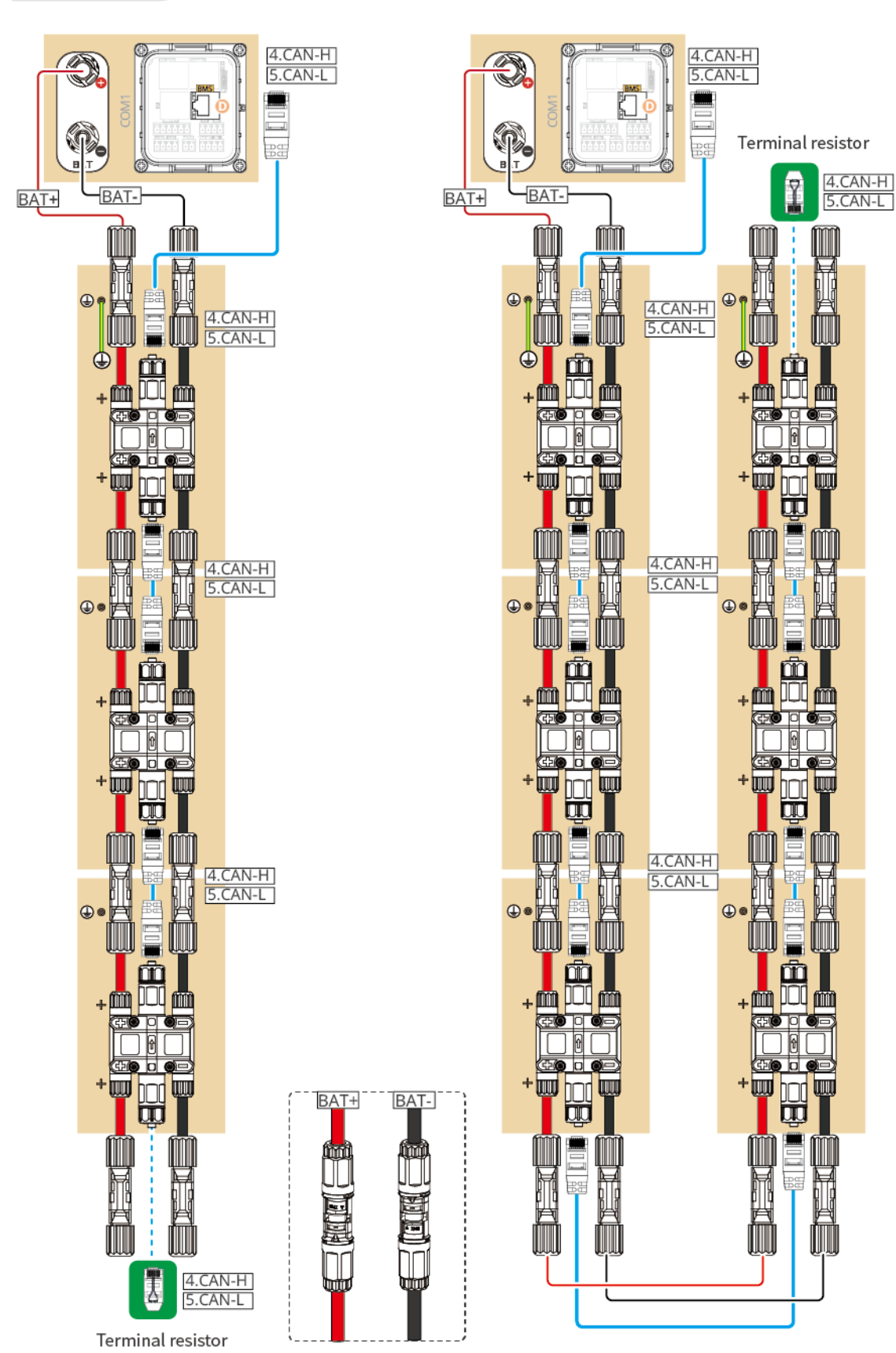


CAT 5E and higher categories

Lynx Home F G2



Lynx Home D



05 Equipment Commissioning

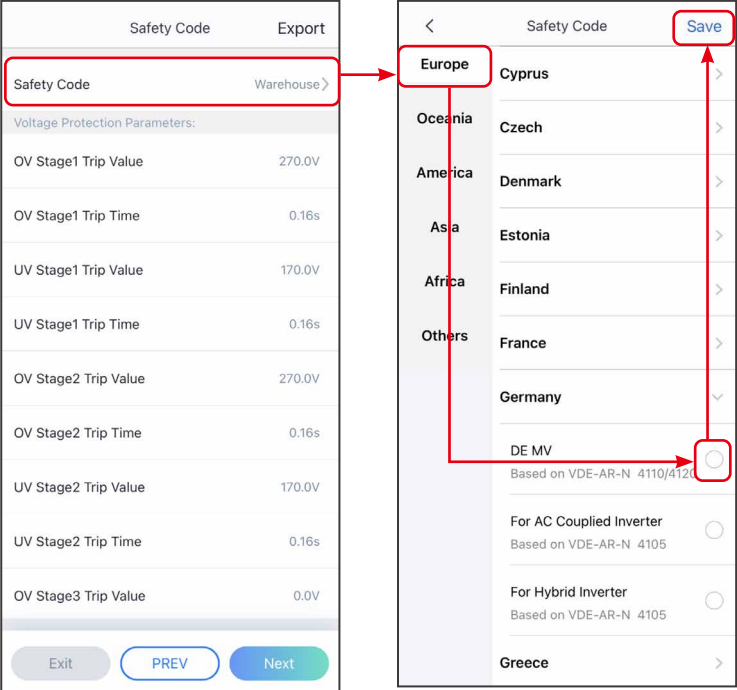


In parallel scenarios, the software version of SolarGo app should be 5.4.0 or above.
Follow the prompts to connect the device.

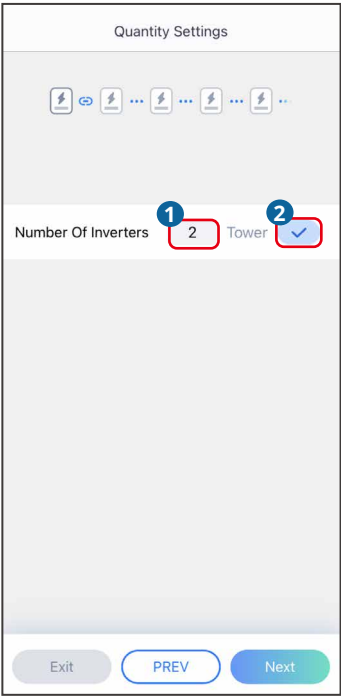
Quick Settings

Tap **Home** > **Settings** > **Quick Settings** to complete quick settings step by step.
Installer password: goodwe2010

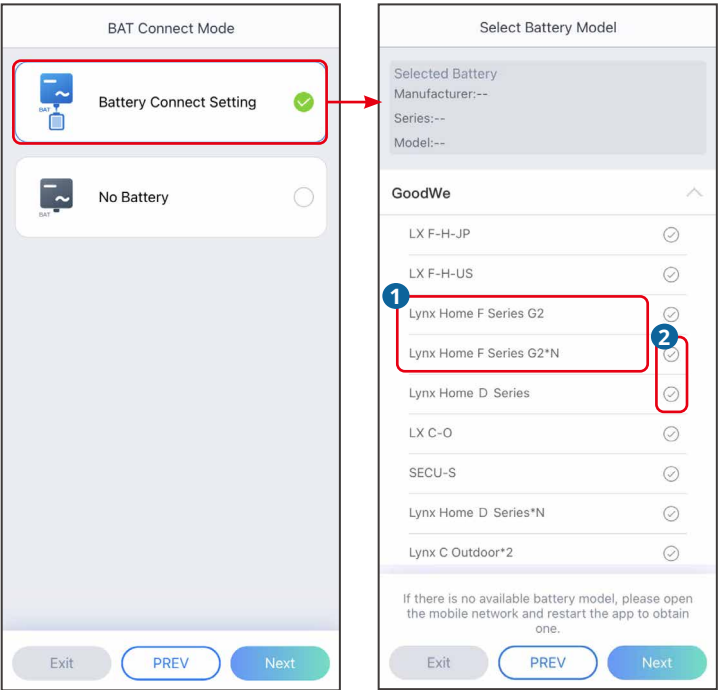
Setting the Safety Code



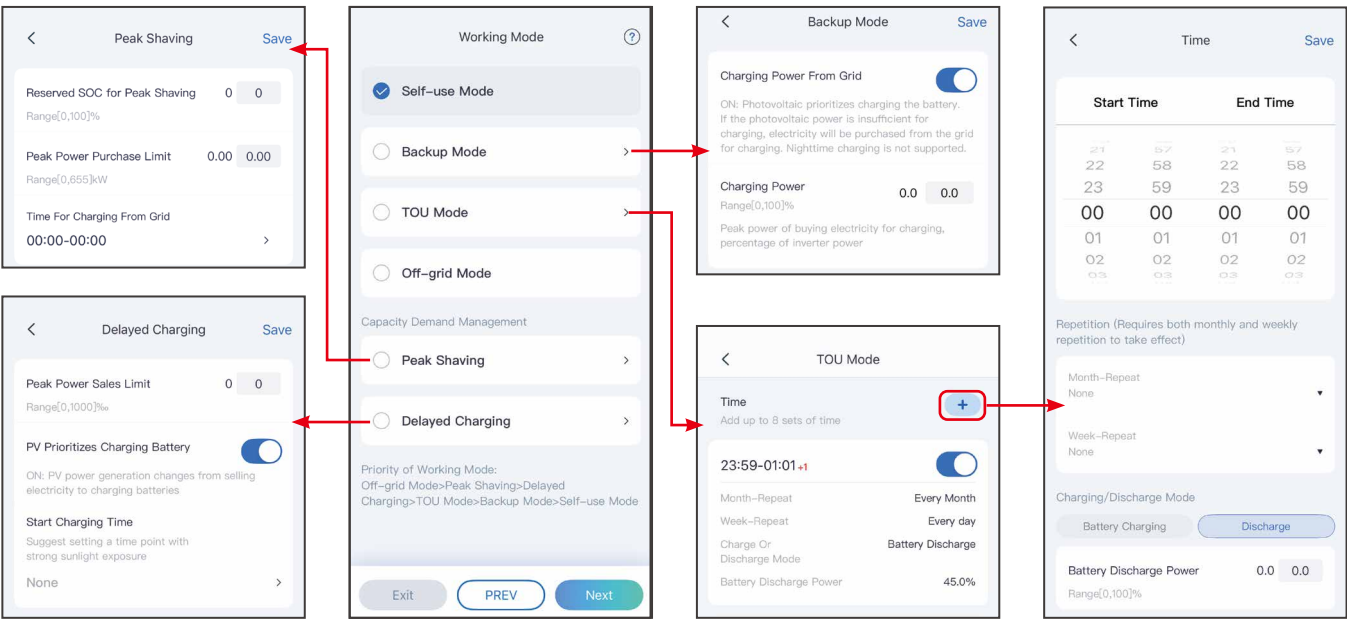
Setting Inverter Quantity (Only For Parallel Connections)



Setting the BAT Connect Mode

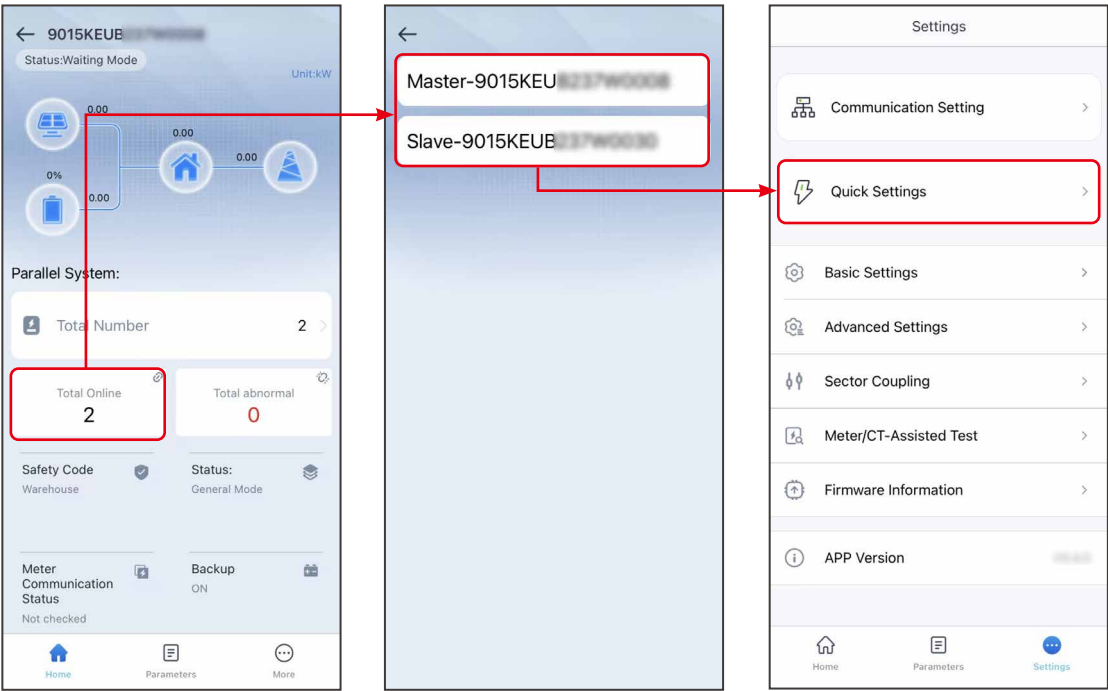


Setting the Working Mode



Setting Batteries Of Each Inverters (Only For Parallel Connections)

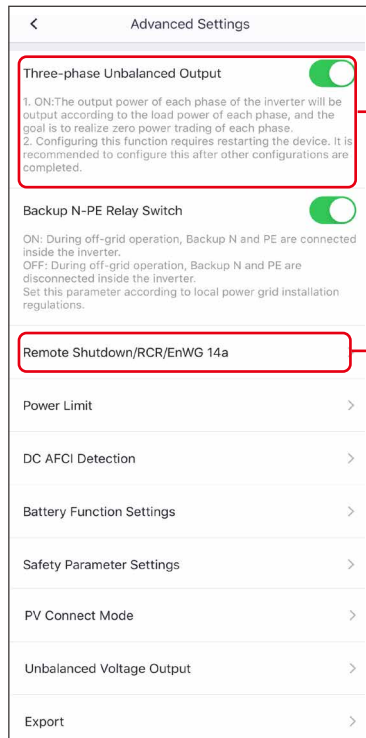
Follow the prompts to set the battery model and connection mode of each inverter.



Setting the Advanced Parameters

Tap **Home** > **Settings** > **Advanced Settings** to set the following functions.

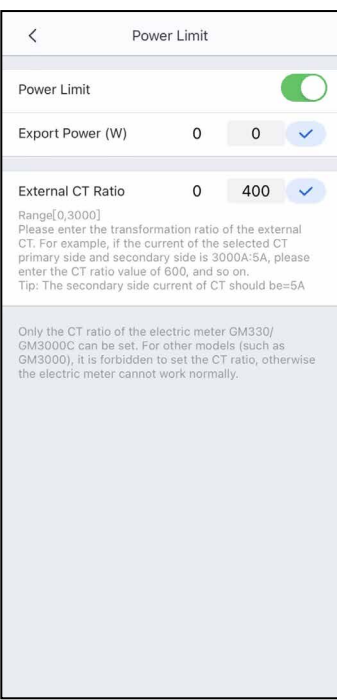
Setting DRED/Remote Shutdown/RCR/EnWG 14a or Three-phase Unbalanced Output Function (Optional)



Enable **Three-phase Unbalanced Output** when the utility grid company adopts phase separate billing.

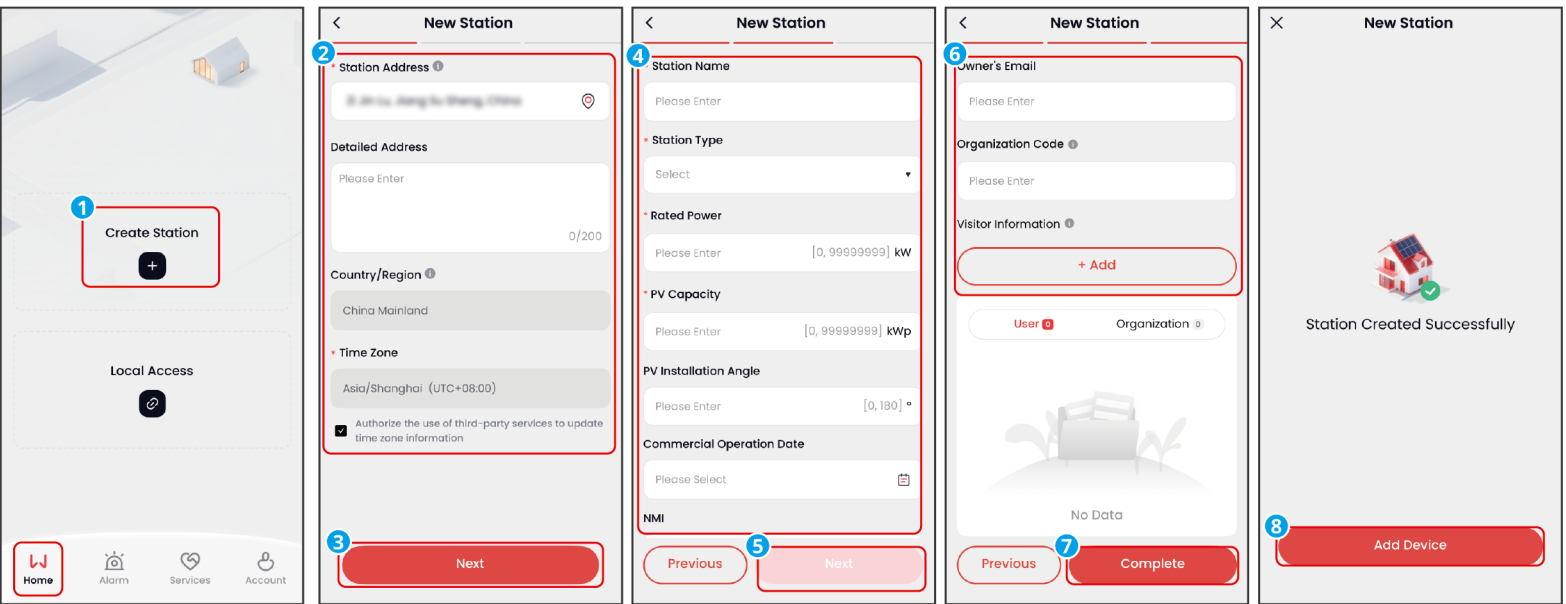
To use the EnWG 14a, please ensure that the ARM software version is 13.435 or above, and the SolarGo version is 6.0.0 or above.

Setting the Power Limit Function



Creating a Power Plant

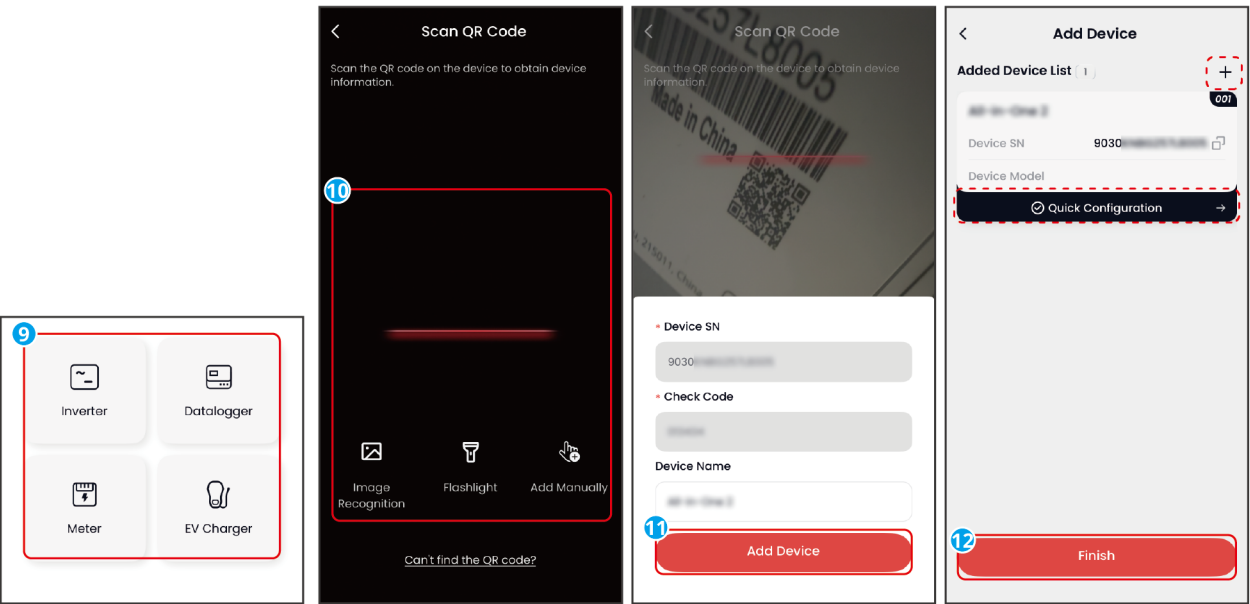
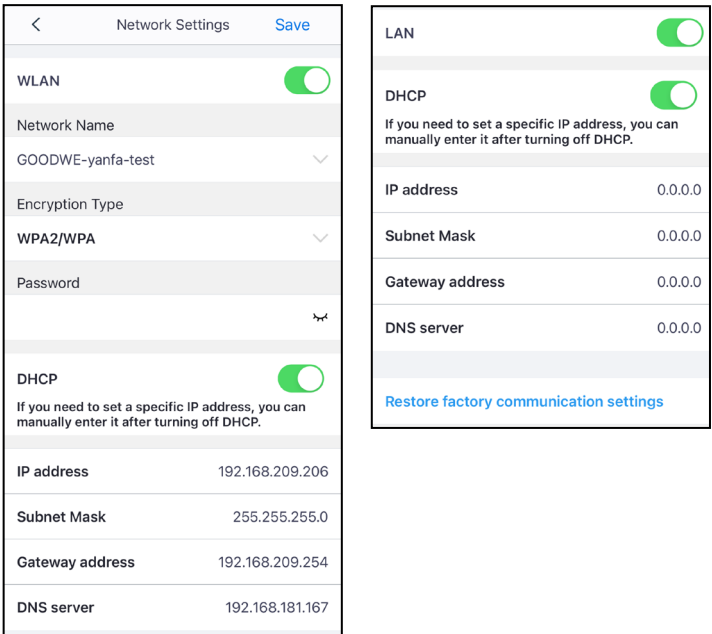
Create power plants and add equipments via SEMS+ app.



Configuring the Network

Tap **Home** > **Settings** > **Communication Setting** to set network parameters.

WiFi/LAN Kit-20 or Ezlink3000



SEMS0176

GoodWe Technologies Co., Ltd.

No. 90 Zijin Rd., New District,
Suzhou, 215011, China

www.goodwe.com

service@goodwe.com